

## Queenswood Primary School .

### 2020-21 Catch Up Premium

#### School Planning 2020-21

Queenswood Primary school has been allocated a total of £ 8400 for this academic year, £ 4900.35 paid within this financial year and £3499.65 paid in the next financial year.

#### **EEF recommendations.**

In order to support schools with school planning whilst we are in a world pandemic, the Education Endowment Foundation (EEF) has produced two help guidance documents:

“The EEF guide to supporting school planning – A tiered approach to 2020-21”

[https://educationendowmentfoundation.org.uk/public/files/Publications/Covid-19\\_Resources/The\\_EEF\\_guide\\_to\\_supporting\\_school\\_planning\\_-\\_A\\_tiered\\_approach\\_to\\_2020-21.pdf](https://educationendowmentfoundation.org.uk/public/files/Publications/Covid-19_Resources/The_EEF_guide_to_supporting_school_planning_-_A_tiered_approach_to_2020-21.pdf)

and

“Covid-19 support guide for schools”

[https://educationendowmentfoundation.org.uk/public/files/Publications/Covid-19\\_Resources/Covid-19\\_support\\_guide\\_for\\_schools.pdf](https://educationendowmentfoundation.org.uk/public/files/Publications/Covid-19_Resources/Covid-19_support_guide_for_schools.pdf)

These documents suggests schools plan using a tiered approach with respect to school improvement and also with respect to planning how to support children to catch-up.

“Catch-up” in this context refers to the children learning the main aspects of the curriculum they missed when they were in the first lockdown (March-August 2020.)

This, aforementioned, tiered approach describes 3 tiers and the areas of provision within the tiers which schools they suggest should be focussed on to have the greatest impact this year.

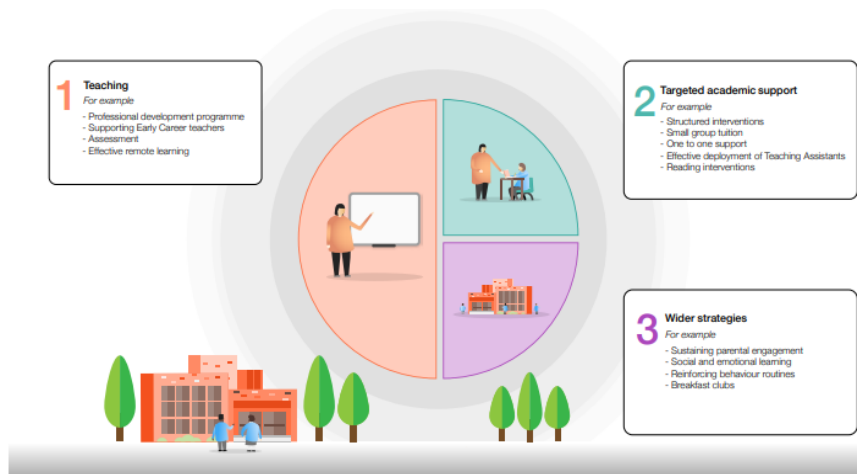
*(The green text are the areas within the “The EEF guide to supporting school planning” and the red text are those areas detailed in the “Covid-19 support guide for schools.”)*

*Tier 1 – Teaching (High-quality for all, effective diagnostic assessment, supporting remote learning and focussing on professional development.) Teaching and wholes school strategies (Supporting great teaching, Pupil assessment and feedback and Transition support)*

*Tier 2 – Targeted academic support (high quality one to one and small group tuition, teaching assistants and targeted support, academic tutoring, planning for pupils with SEND.) Targeted approaches (One to one and small group tuition, Intervention programmes and extended school time)*

*Tier 3 – Wider strategies (supporting pupils social, emotional and behavioural needs, planning carefully for adopting SEL (social and emotional learning) curriculum, supporting parents with pupils of different ages and successfully implementation in challenging times) Wider strategies (Supporting parent and carers, access to technology and summer support)*

It is suggested the a school’s focus should also be split ½ on Tier 1 and a ¼ on Tier 2 and a ¼ on Tier 3, please see the diagram below:



## Catch Up Premium

The Government has allocated funding to each school to support “Catch-up”

<https://www.gov.uk/guidance/coronavirus-covid-19-catch-up-premium#use-of-funds>

This Dfe guidance states:

*Schools should use this funding for specific activities to support their pupils to **catch up** for lost teaching over the previous months.*

### CATCH UP PREMIUM for this school

Our school has been allocated a total of £ 8400 for this academic year.

£ 4900.35 paid within this financial year and £ 3499.65 paid in the next financial year.

As a school we have decided to use the tiers to support our decision-making with respect to how we spend our catch-up premium. The decisions are also guided by the school’s vision and our determination to ensure all our children “catch-up” and we do not allow this pandemic to adversely effect any of our children’s academic or emotional development.

The steps so far:

Activity	outcomes	Catch up funding.
Whole school provision of a ‘Recovery’ Curriculum during the first three weeks in school in the Autumn term ( 2020)	Allowed pupils to reflect on the lockdown experience , develop a sense of being part of the school community once more, appreciate their place and role in the school community , identified any gaps in learning and returned pupils to a mental state where we could accelerate their progress.	£200 to support costs of Oliver Jeffers books and materials to enable recovery curriculum.
All staff to provide weekly one hour extensions to the school day for targeted pupils in their bubble. Including; Music, Arts, Craft, Reading, Communication ( Talking and Listening) , Sport,	Pupils have been engaged in an enriched curriculum offer and have had an opportunity to further develop their skills in reading, writing and maths. An increasing number of the pupils	£200 to help cover the additional purchases of equipment

Number Club, Gardening Club and Construction Club.	are closing the gap to age related expectations.	and resources to support the extension activities.
Additional dance classes for Year 5 / 6 bubble. Delivered by Cross Bar coach- After school and Friday afternoon. Autumn term 2020	Collaborative dance class aimed at supporting social and emotional development of pupils, enabling them to be more focused on the class based learning.	7 sessions x £50= £350
Pupil and Family Support Officer has been timetabled to provide nurture sessions for individuals requiring support for their social and emotional needs.	Pupils have been more prepared to learn, have shown progress and have significantly improved their attendance.	Costs covered by school staffing budget.
The extension of a 0.5 teacher contract to 0.6. The additional half day provided by this contract extension will enable her to work with the Year 5/6 class at the same time as her job share partner on Wednesday morning.	During the morning session the teacher will provide additional group extension activities for the pupils in the class who need to accelerate their progress in the core subjects to help them be prepared for Secondary school.	The cost of this additional half day over the remainder of the Academic year will be £2,523
The extension of the work of a professional dancer to work with pupils from Upper Key Stage 2 once a week for the rest of the academic year. (Spring and Summer term)	The sessions will focus on Collaborative dance class aimed at supporting social and emotional development of pupils. Enabling them to be more focused on learning in the classroom by building their self-esteem, giving them an increased sense of belonging and developing their confidence.	25 sessions x £50 = £1,250
Planned expenditure at the end of December 2020-		£4523
Balance remaining from DfE catch up premium of £8400-		£3868
A review of the impact of catch up funding to be completed on the 8 <sup>th</sup> February 2021 and a decision to be taken at this point about the most effective allocation of the £3868 balance.		

